

Ligar Bay Beach House

Takaka, New Zealand

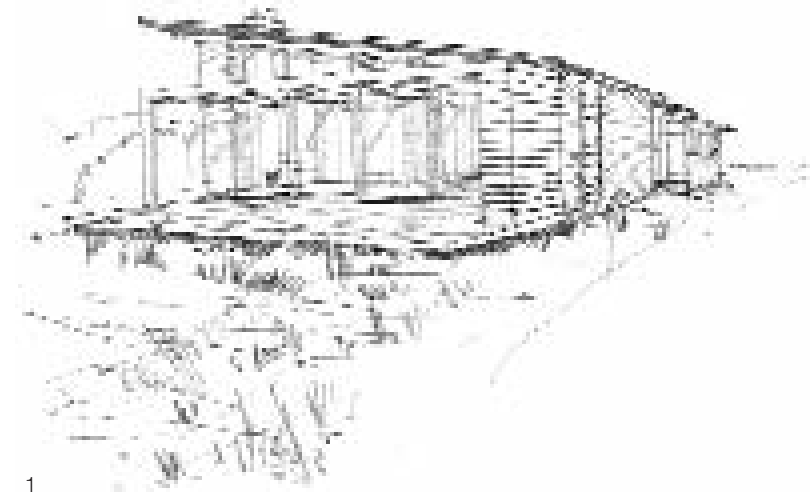
Taking full advantage of the natural conditions, spectacular views, weather conditions and surrounding vegetation, this beach house is sited on an ancient, weathered sand dune. The site rises steeply above the beach and road. The dune slopes gently down and away from the beach. To comply with the limits imposed on coastal developments in the area the house has been built lower to the ground than neighbouring houses.

The new beach house responds to the conditions of the site and the clients' desire for relaxed beachside living. While the beach is an idyllic golden, sandy bay, with plenty of sunshine, the afternoon wind picks up regularly. The concept was to develop spaces that could be utilised in various conditions, dissolving the boundary between the inside and outside.

The roofline was conceived as a low, long mono-pitched roof covering the living, dining, kitchen and outdoor deck spaces in the upper level, and stepping down, in line with the contour of the dune for sleeping accommodation.

The site has two accesses. Vehicle access is from the rear of the site. This ensures the northern slope of the dune faces the beachside road and remains undisturbed. The second was developed to provide boat access and parking. This allowed the slope of the dune to remain unchanged.

1 Design sketch
Opposite:
View of house from beach



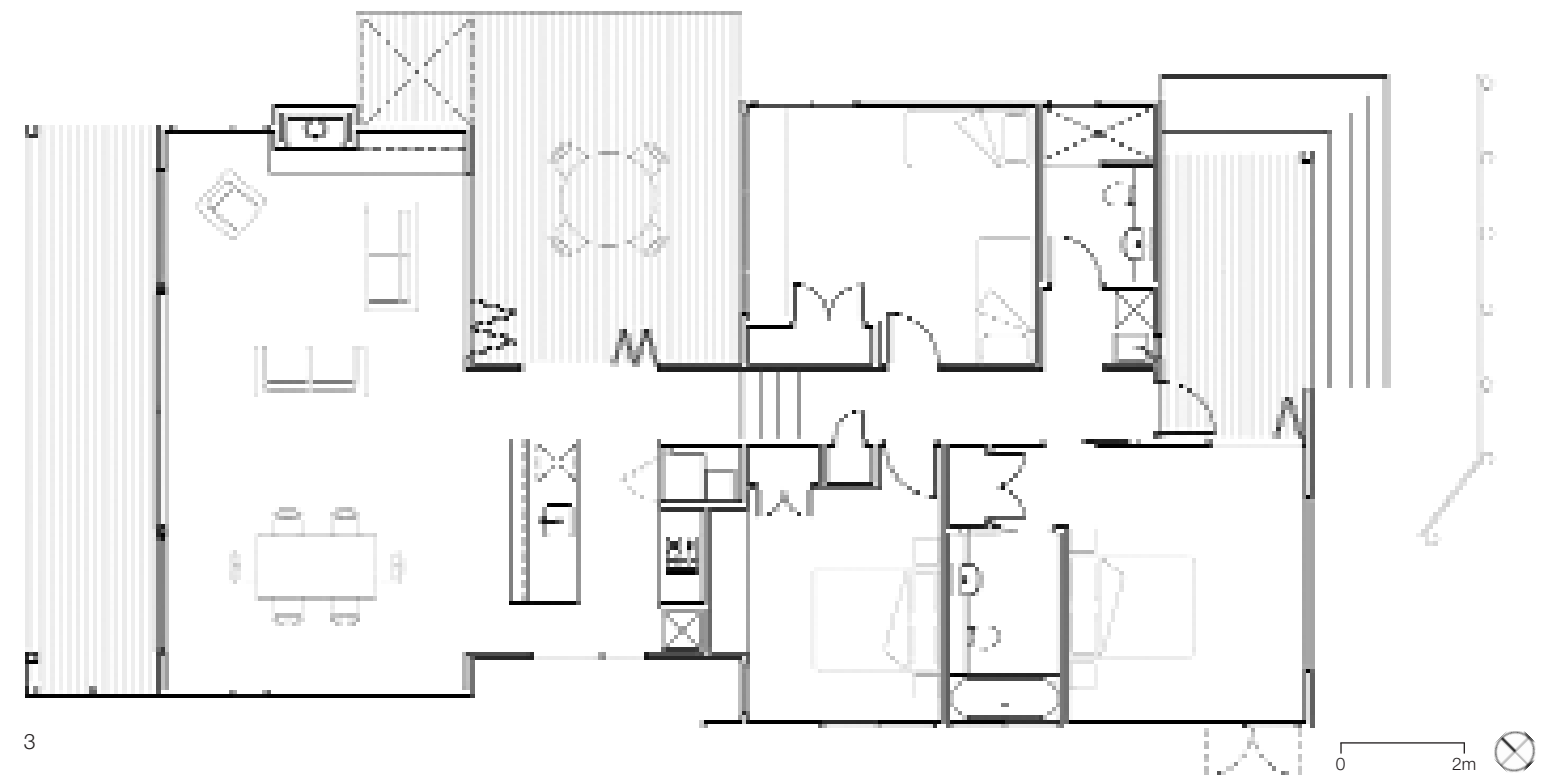
1

In line with the relatively tight budget, plywood cladding and colour-coated aluminium were used as the most economically viable and weather resistant materials for this dwelling.

The design also explores the possibilities of developing a courtyard space within a narrow site. The courtyard offers shelter from the afternoon breeze, controls privacy and has the flexibility to open any or all the living and kitchen spaces to the courtyard.



- 3 Floor plan
- 4 View through living space to sea
- 5 Central courtyard deck
- 6 View to bay





7



8