



**DAVY/DAVIDSON HOUSE**  
 Paraparaumu, Kapiti Coast  
 Bevin + Slessor Architects  
 Ric Slessor (project architect), Nick Bevin,  
 Grant Bannatyne, Cameron Lakeman

The existing home, a 1950s prefabricated cottage, enjoyed views across the west-facing site to Kapiti Island. The family had outgrown this cottage but the siting was ideal for a new house. The cottage was relocated lower down the site and a new dwelling designed to engage the views and sun, using economic, low maintenance materials and a simple architectural form.

While the brief called for five bedrooms and separate living spaces, a lightweight single storey building was determined by

the budget and ground conditions, and the site – the crest of a terrace, close to a mature stand of New Zealand bush which the new house also needed to relate to and engage with. Care was taken to allow the house to be opened up to the west while details were included to take account of the impact of traffic noise from State Highway 1 below, and the prevailing westerly wind.

The house was conceived as two gabled pavilions: the ‘sleeping’ pavilion and the ‘living’ pavilion. Each was given a different material treatment. The longer ‘sleeping’ pavilion to the rear was clad in dark corrugated Colorsteel, while the forward, more open and light ‘living’

pavilion received livelier textural treatment, being clad in a combination of plywood, gapped cedar battens over painted cement boarding and corrugated zincalume.

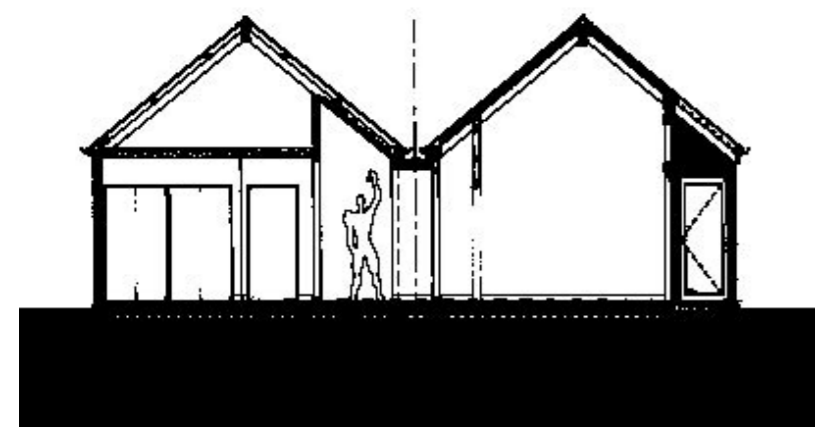
The main circulation follows the line of separation between the two pavilions with a wide transparent cross axis about the core, containing the family dining space, with views to the coast and east back into the nearby bush. The strong Kapiti Coast sunlight is filtered and reflected through timber screens and louvres. The adjustable timber louvres also provide cross ventilation through the rooms while the windows remain as large fixed glazed openings, free of window mechanisms, facing west. The floor area was kept to 195m<sup>2</sup>.

Within the ‘living’ pavilion the dining area allows for circulation between the formal living and informal kitchen and sitting areas and also opens out to the west. The interior materials are clear finished plywood ceilings, painted walls, polished concrete floors, timber floors and exposed double macrocarpa rafters. The cost of the project, including relocating the existing cottage and providing two new septic tanks, was about \$300,000. Ric Slessor, Nick Bevin

*The Davy/Davidson House received a 2002 NZIA-Resene Local Award for Architecture for, among other things, its “refreshing departure from flat roof Modernism”.*



ABOVE: PLAN OF THE DAVY/DAVIDSON HOUSE. BELOW: SECTION, FROM THE SOUTH; THE HOUSE, LOOKING FROM THE NORTH-WEST. OPPOSITE, ABOVE: NORTH END OF THE HOUSE. BELOW: WEST FACE OF THE HOUSE.



PHOTOGRAPHS: BELINDA POPE